

# PINES OF WESTLAKE - PHASE II

A SUBDIVISION IN SECTION 5, TOWNSHIP 43 SOUTH, RANGE 41 EAST, CITY OF WESTLAKE, PALM BEACH COUNTY, FLORIDA, BEING A REPLAT OF TRACT "V", PINES OF WESTLAKE - PHASE I, PLAT BOOK 136, PAGES 3 THROUGH 21, INCLUSIVE, PUBLIC RECORDS OF PALM BEACH COUNTY, FLORIDA.

POINT OF COMMENCEMENT  
NORTHEAST CORNER SECTION 5-43-41  
N:884731.361 E:896687.606

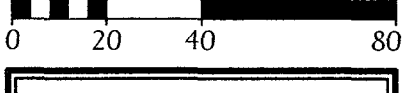
TOWNSHIP 42 SOUTH, RANGE 41 EAST  
TOWNSHIP 43 SOUTH, RANGE 41 EAST

EAST BOUNDARY OF SECTION 5-43-41

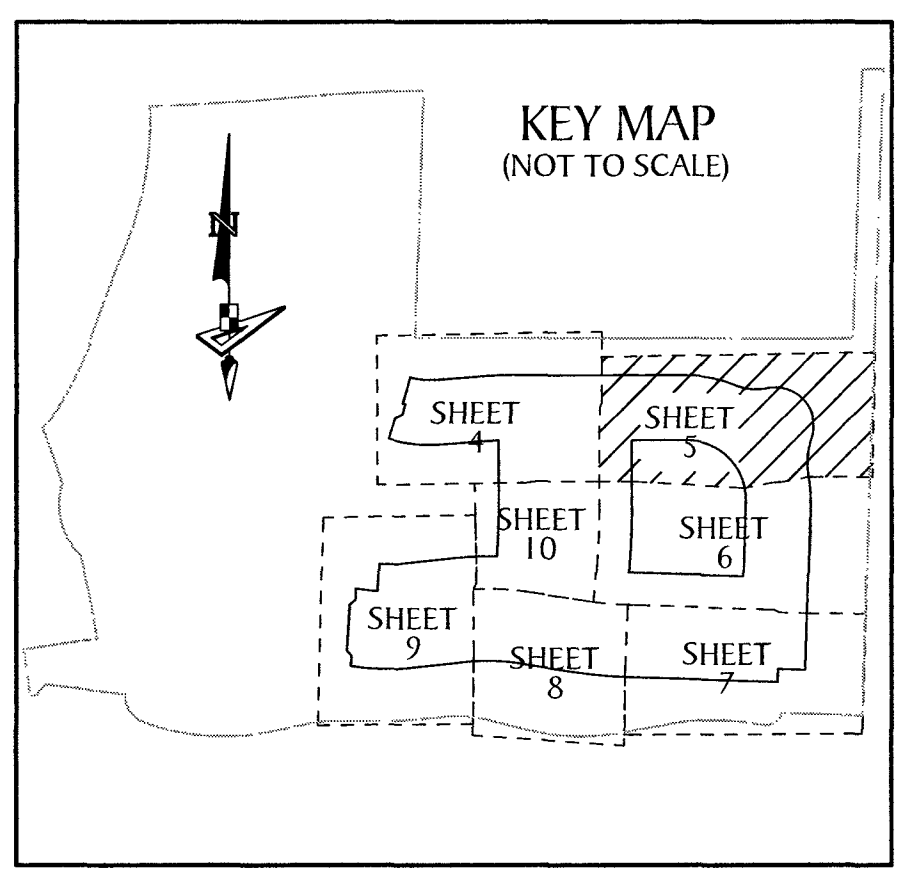
SOUTHEAST CORNER OF SCHOOL DISTRICT OF PALM BEACH COUNTY (O.R. 9169, PG. 136) & (O.R. 9232, PG. 1206)



SCALE 1" = 40'



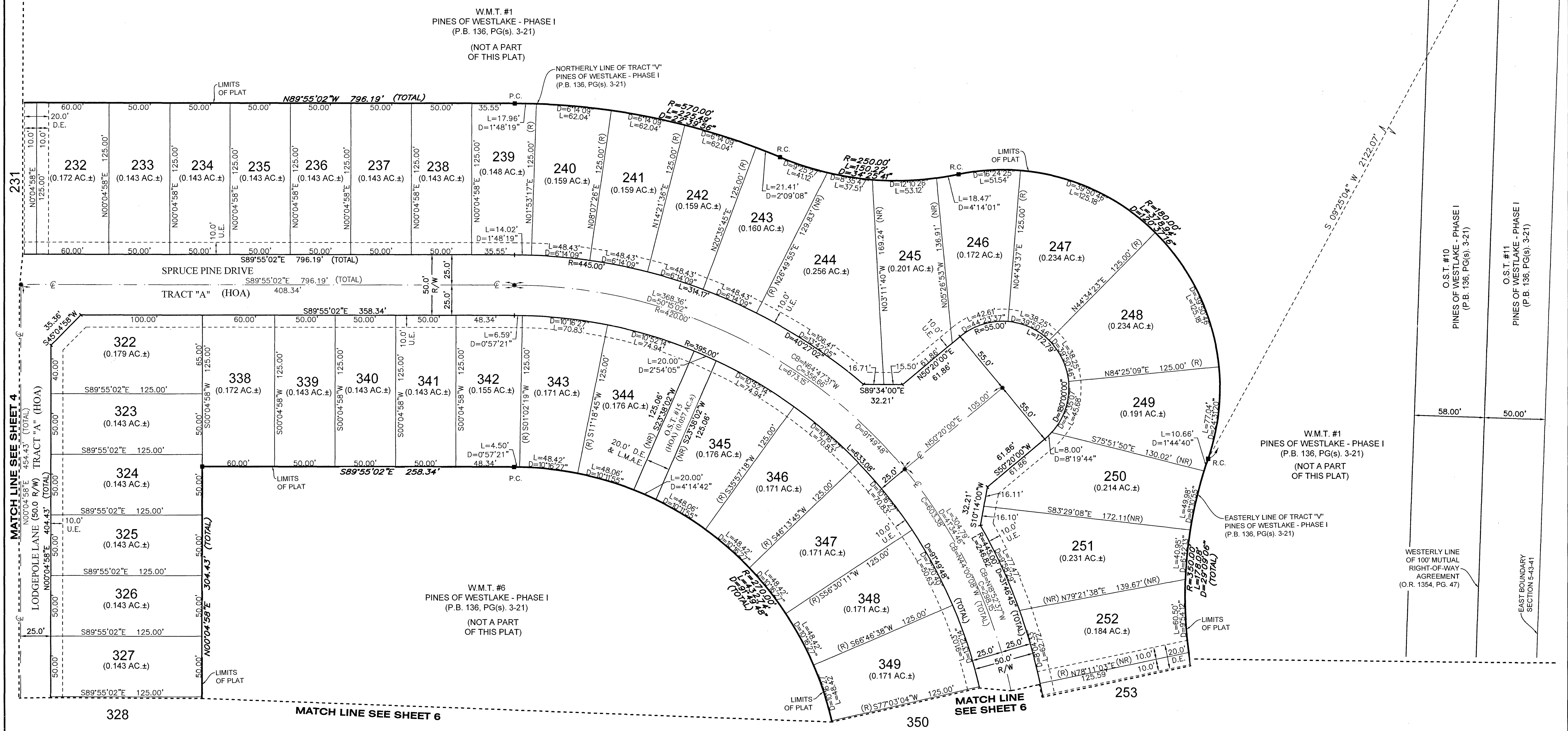
SEE NOTE ON SHEET 2 FOR BASIS OF BEARINGS



W.M.T. #1  
PINES OF WESTLAKE - PHASE I  
(P.B. 136, PG(s). 3-21)  
(NOT A PART OF THIS PLAT)

NORTHERLY LINE OF TRACT "V"  
PINES OF WESTLAKE - PHASE I  
(P.B. 136, PG(s). 3-21)

SOUTHERLY BOUNDARY OF SCHOOL DISTRICT OF PALM BEACH COUNTY  
(O.R. 9169, PG. 136) & (O.R. 9232, PG. 1206)



### LEGEND

- |   |   |                                       |  |   |
|---|---|---------------------------------------|--|---|
| P.O.B. ----- POINT OF BEGINNING         | O.S.T. ----- OPEN SPACE TRACT                   | D ----- DELTA ANGLE                   | R.C. ----- REVERSE CURVATURE               | PRM ----- PERMANENT REFERENCE MONUMENT  |
| P.O.C. ----- POINT OF COMMENCEMENT      | P.B.C. ----- PALM BEACH COUNTY                  | CB ----- CHORD BEARING                | R.I. ----- RADIAL INTERSECTION             | ● ----- PERMANENT CONTROL POINT   |
| P.B. ----- PLAT BOOK                    | U.E. ----- UTILITY EASEMENT                     | C ----- CHORD                         | R/W ----- RIGHT-OF-WAY                     | □ ----- FOUND PERMANENT REFERENCE MONUMENT                                      |
| D.B. ----- DEED BOOK                    | D.E. ----- DRAINAGE EASEMENT                    | N.T.I. ----- NON-TANGENT INTERSECTION | (R) ----- RADIAL                           | ■ ----- SET 4"x4" CONCRETE MONUMENT WITH 2" ALUMINUM DISK STAMPED "PRM LB 7768" |
| O.R./O.R.B. ----- OFFICIAL RECORDS BOOK | L.M.A.E. ----- LAKE MAINTENANCE ACCESS EASEMENT | N.T.C. ----- NON-TANGENT CURVATURE    | (NR) ----- NON-RADIAL                      |   |
| PG./PG(s) ----- PAGE(S)                 | 5-43-41 ----- SECTION-TOWNSHIP-RANGE            | P.C. ----- POINT OF CURVATURE         | HOA ----- HOMEOWNERS ASSOCIATION           |   |
| NAD ----- NORTH AMERICAN DATUM          | R ----- RADIUS                                  | P.T. ----- POINT OF TANGENCY          | S.I.D. ----- SEMINOLE IMPROVEMENT DISTRICT |   |
| W.M.T. ----- WATER MANAGEMENT TRACT     | L ----- ARC LENGTH                              | C.C. ----- COMPOUND CURVATURE         |  |   |



4152 W. Blue Heron Blvd.  
Suite 105  
Riviera Beach, FL 33404  
Phone: (561) 444-2720  
www.geopointsurveying.com  
Licensed Business Number LB 7768